

RadarOpus advised program settings

If you notice the layout (Font size, and Windows sizes) does not look correct, please read at the end the chapter
Compatibility with High-Resolution screens

Below you find a few settings which will make your RadarOpus work optimal for novice users.

1. In the List of all repertories, it is best to select to **Show All Languages**.

One advantage is that if a language flag changes to a different country flag, you will always see the document in the list.

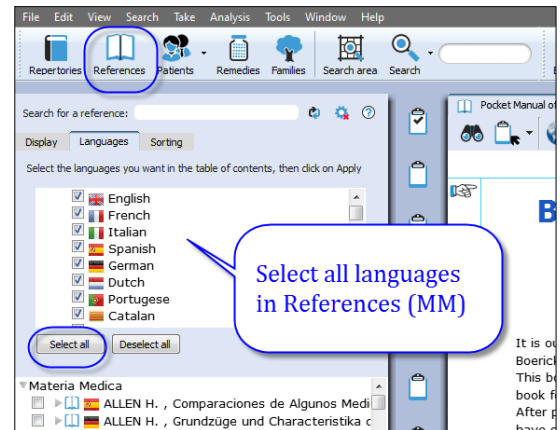


2. Also in the list all References (MM), it is best to select to **Show All Languages**.

One advantage is also that you will see free documents which are sent with live updates, for example new proving documents.

Note:

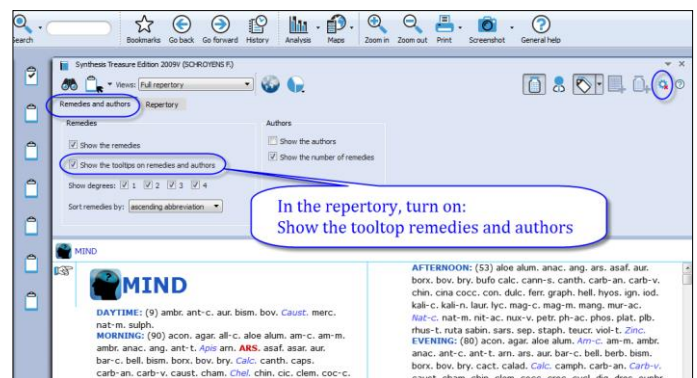
If you have received a **try-out period**, or **temporary license**, you might want to select in this list of References only a few languages you are interested in, to make sure you are not overwhelmed by too many documents



3. In the Repertory window, you can select the following option to be **On**:
Show the tooltip on remedies and authors

Note:

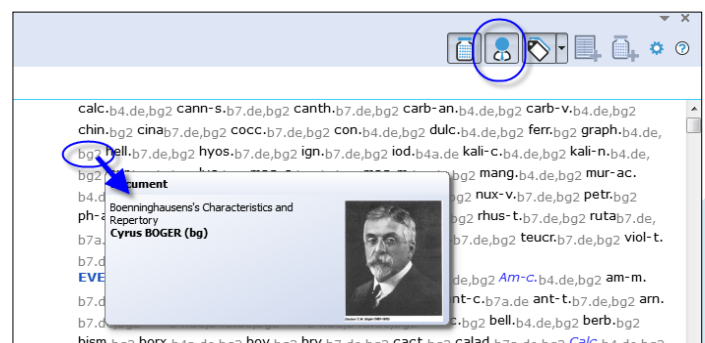
If you do not like this option, you can always switch it Off again later.



You can switch On with the button "shows authors":

The result will be that a tooltip will pop up, when you hold the mouse above an **author abbreviation**.

If you want to keep the tooltip open for more than a few seconds, you must move and **hold your move above the tooltip balloon**.



4. In the Search window:
Select ON: The default search location and it should say: **Current document only**

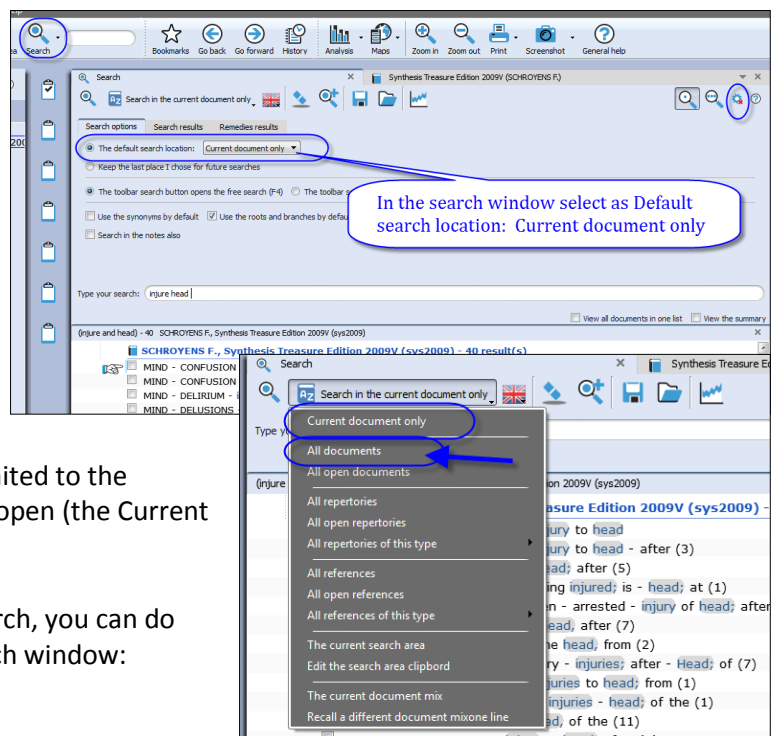
This will result in the following behavior:

- If you are in the Synthesis repertory and open the Search window, you will only search in Synthesis.

- If for example you are in the Boericke and open the search window, you will only search the Boericke

So your search result will always be limited to the content of the last document you had open (the Current document).

If you however like to extend your search, you can do this by selecting at the top of the Search window: **Search in "All documents"**.

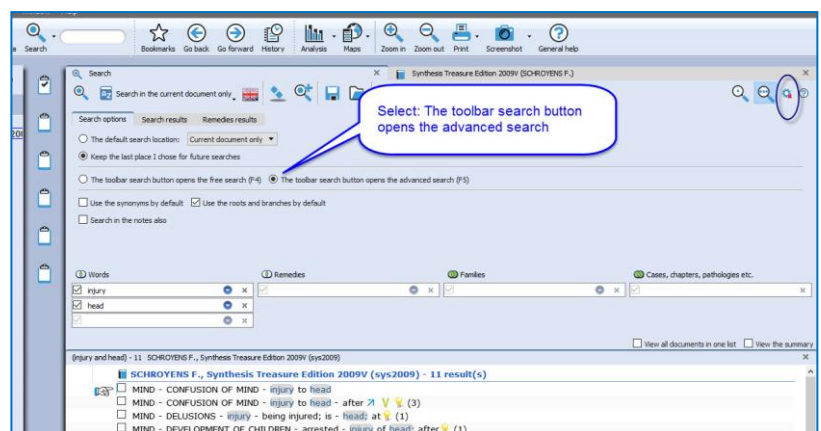


5. You can also change in this same 'local options window': **The toolbar search opens the advanced search (F5)**

The result will be, if you click in the main tool bar on the **Search button**, it will open the **Advanced search**.

Tip:

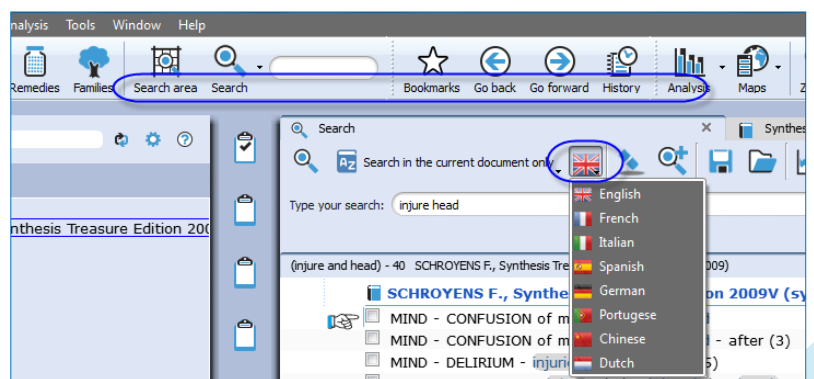
And with by pressing on the keyboard the **?** (question mark) the **Simple search** windows will open.



6. Search Language

The default search language (the language **flag**) in version 2.0 or higher corresponds to the (first) language of document you came from.

If the Search window (tab) was already open, it will keep the current selected language and you need to change the flag manually if needed.



7. Show more / less symptom clipboard icons

If you like to see more (or less) symptom clipboard icons, then **Right mouse** click on a clipboard icon, and select **More clipboards**.

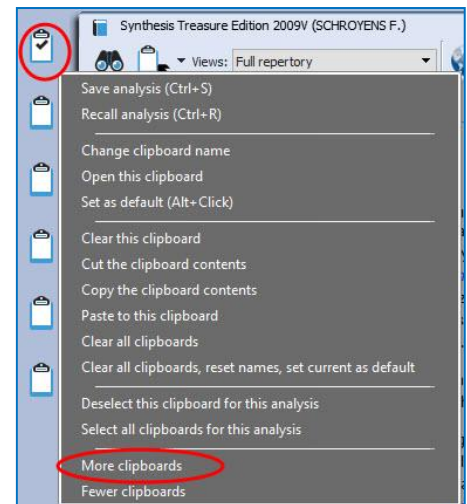
Note:

MINI RadarOpus has only 1 symptom clipboard

SILVER RadarOpus has only 3 symptom clipboards

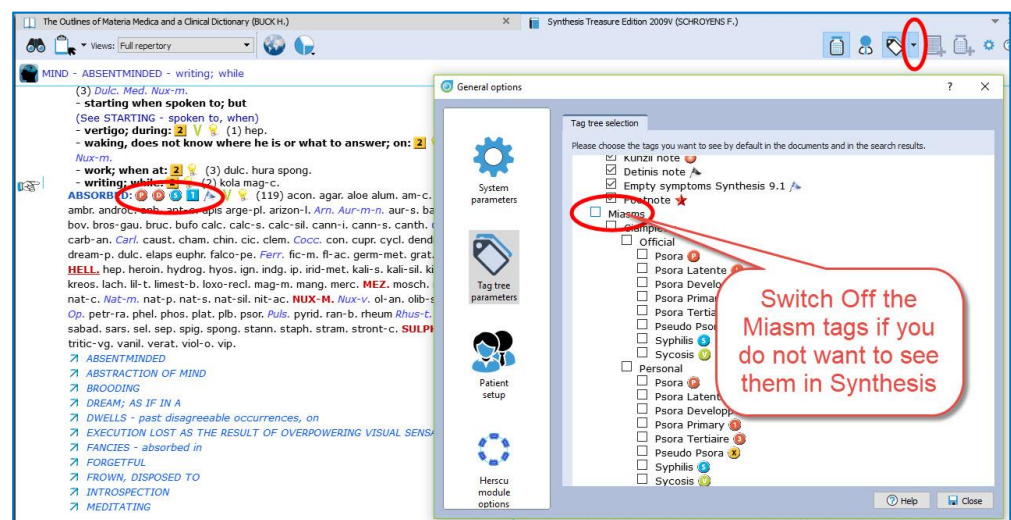
GOLD RadarOpus has only 6 symptom clipboards

DIAMOND RadarOpus has up to 12 symptom clipboards



8. Remove Miasma Tag-icons, or other Tag-icons

If you might see many Miasm tags in the Synthesis repertory, and you do not like to see them, then click on the **Tags sub-button**. And de-select **Miasms**.



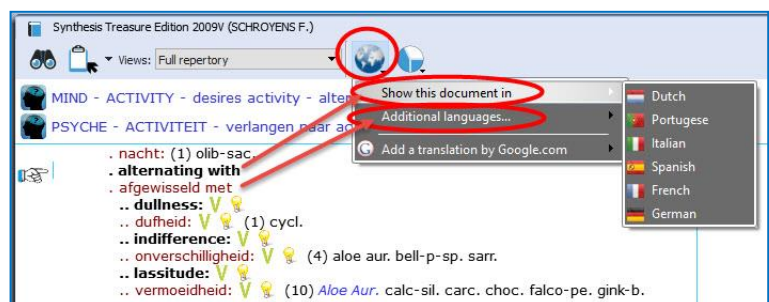
9. Switch the First (or show second) language in Synthesis, Boennighausen or other documents

If your package gives access to one or more languages in some documents, then you can use the **World icon** as follows:

Change the First language via:

Show this document in:

To turn on your Second language select: **Additional languages: ...**

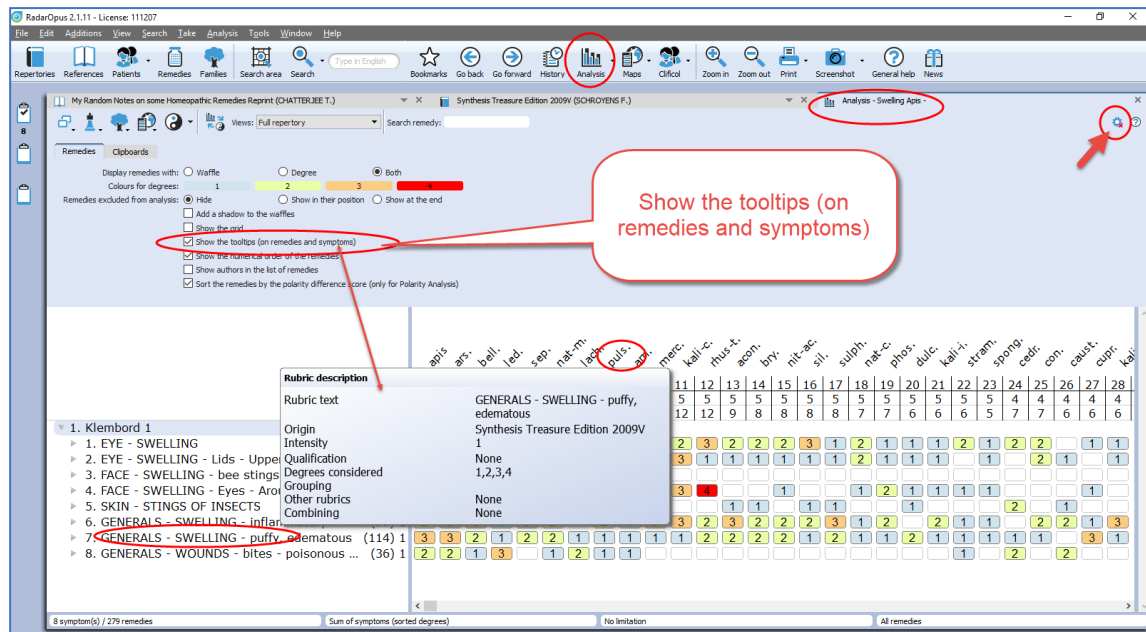


Note:

If you open the Word search window (Simple search or Advanced search) you can only search in the First language.

10. Show tooltips on remedies and authors in the analysis window On/Off

If you do not like the **tooltip balloons** to open when holding the mouse above the symptoms taken into the clipboard, or when holding the mouse above the remedy abbreviations, then you can turn this Off via the local options.

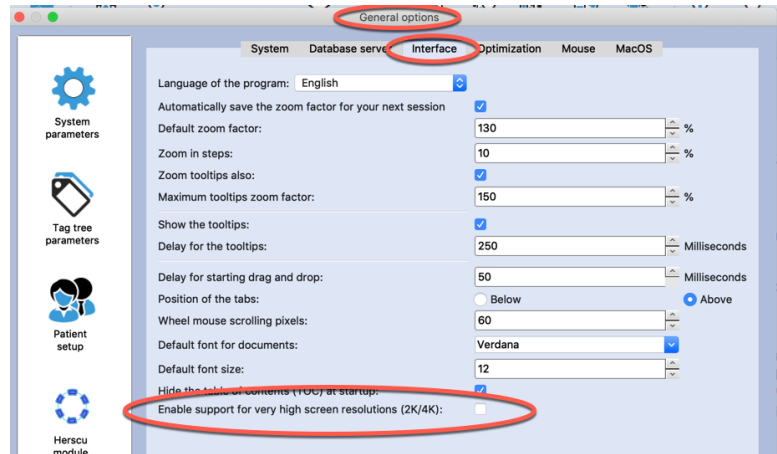


Compatibility with High-Resolution screens

Radar Opus 2.1 has improved functionality to work with high resolution screens.

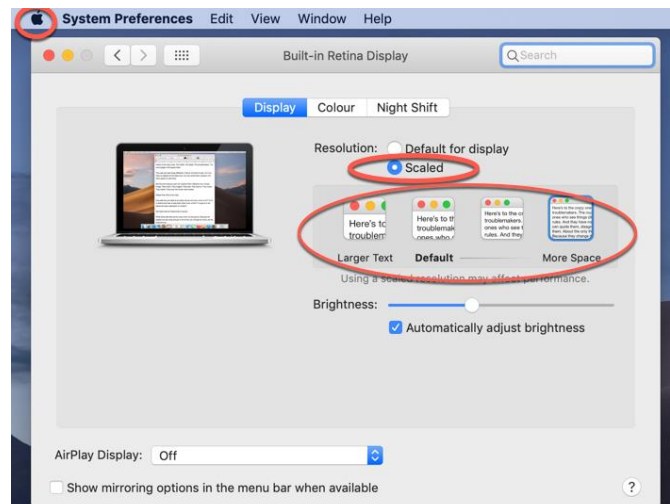
If you feel you like to improve the layout of RadarOpus on your computer, you can try the following to see which one will work optimal for your computer:

- Open in RadarOpus the **General settings**, and check ON or OFF “**Enable support for very high screen resolutions**” (tryout what works best).

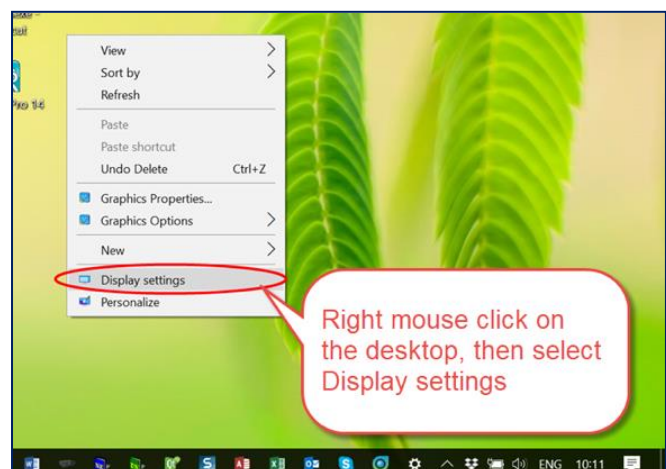


- On Mac** you can also go via the **Apple** icon, to **System Preferences, Displays**.

Change the **Default** for display to **Scaled** and tryout one higher or lower resolution setting.

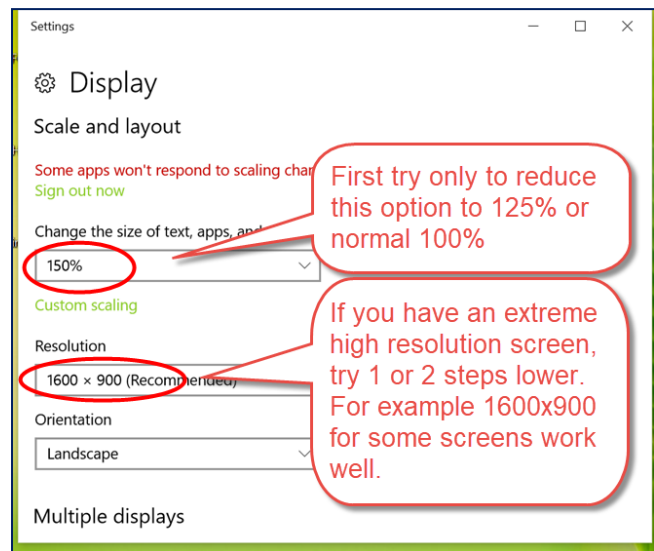


- On Windows** Right mouse click on the desktop, then select **Display settings**.



Then first try to change “**Change the size of text**”, for example from 150% to **125%**, or **100%**.

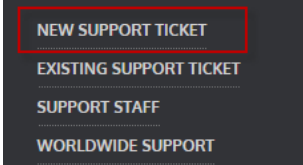
Restart RadarOpus and see the result



If you cannot set the Font size and Windows sizes in a way you can comfortably work with RadarOpus, then please contact your local representative or the **Technical support**, or see the chapter **How to contact the technical support**

How to contact technical support

The fastest way to get help is to enter a technical support request via our **Ticket system**:

- Go to: www.radaropus.com
 - Then select at the bottom of the page: **New support ticket**
- 
- On working days, you will receive an email from technical support within 24 hours.
 - The Technical support will often propose that you join them for a **support session**:
 - Go to the website support.zeus-soft.com
 - Click on the **name of the support person** who has contacted you.
 - Download the Bomgar software; if you cannot see the file download on your web page, go to your downloads folder (or wherever your computer downloads files from Internet) and double click on the Bomgar file (the icon is an orange square with a white B) to run it.
 - Click on Full Terms and Conditions and then on Accept
 - Click on Yes to accept the request for elevation of privileges
 - Click on Allow shared control of your computer

The technical support can only help you if you have a **Ticket** number